

MISS 2D Spectrometer

MISS stands for Mini Imaging Spatial Spectrometer. This innovative spectrometer gives access to the **spatially resolved spectrum** of your sources. Thanks to its unique compactness, the MISS allows vertical and horizontal **spatial chirp measurements** at any position of your beam path. It can easily be integrated at different stages of amplified laser systems. Use it in **free space mode to take benefit of the spatial resolution**, or with a fiber input, like a regular spectrometer.



Key features

- Compact design
- Horizontal and vertical spatial chirp measurement
- User-friendly and powerful software
- High spatial and spectral resolution
- Different models from 240 to 1100 nm. SWIR models up to 1700 nm also available
- Input beam diameter up to 12.7 mm
- Single shot capable up to 75 kHz

Options

- Fiber input connector
- High dynamic range
- Trigger

Specifications

Models	UV-VIS	IR	Yb	TiSa	UV-VIS-L	IR-L	TiSa-L	Broadband-L
Type	standard				large beam (L)			
Spectral range (nm)	240 – 800	545 – 1100	900 – 1090	725 - 875	250 – 700	650 – 1100	360 – 1040	280 – 1095
Camera resolution	2056 x 1542 3 Mpx				2448 x 2048 5 Mpx			
Spectral sampling (nm/px)	0.29	0.27	0.11	0.11	0.23	0.22	0.28	0.16
Optical spectral resolution (nm) ¹	< 1	< 0.8	< 0.35	< 0.45	1 - 1.5	1 - 1.3	1 - 1.5	0.6 - 1.1
Input beam size (mm)	> 6.3			> 8.6	> 12.5			
Max spatial resolution (μm)	< 4.5				5.2		6.5	3.6
Exposure time min – max (ms)	0.024 – 1 000				0.013 – 1 000			
Shutter type	Global							Rolling
Detection	CMOS 12 Bits – 72 dB							
PC Interface	USB 3.1							
Dimensions (mm)	102 x 101 x 52				117 x 102 x 52			

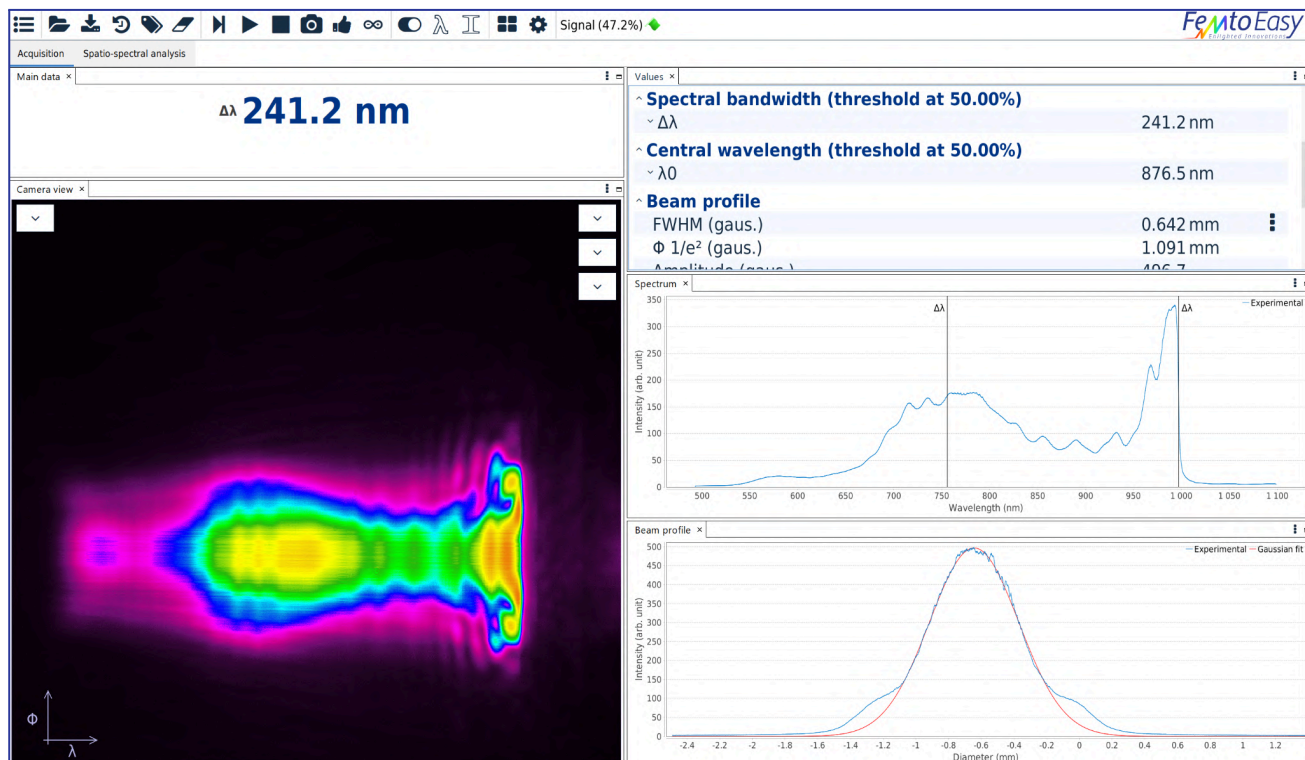
¹ resolution achieved on the highest resolved part of the spectral range

² due to rolling shutter, the actual minimum exposure time to capture the whole beam will be limited by the beam size. The larger the beam, the longer the required minimum exposure time.

Custom versions available on request.



STAR Software



- ◆ Live extraction of spatially resolved spectra, spatial chirp, spatially resolved Fourier limited pulse duration analysis...
- ◆ Enhanced background & hot pixels treatment, for optimum dynamic and signal to noise ratio
- ◆ Client / Server interface, allowing remote control through network
- ◆ All data exportable into most common formats

23 avenue Léonard de Vinci
33600 Pessac
France

femtoeasy.eu
info@femtoeasy.eu
+33 (0) 972 603 792

© Femto Easy 2026-01. Product specifications are subject to change without prior notice